

expand... your creativity | your production | your opportunities



SignLab Version 9.1 High Fidelity Print and Cut Sign Software

Professional signmaking software in various package and pricing configurations that address the needs of all signshops, big or small. Complete layout, design, text and production features that you simply cannot get in any other software product. SignLab also offers, "Total Solution Modules" that you can add on to your existing package as new business opportunities invariably arise. Be an expert in one software package as opposed to being a novice user in multiple software packages!



Standard Signmaking Packages



SignLab Vinyl

Software that addresses every design and production requirement for vinyl cutting workstations. Includes support for all the latest and legacy vinyl cutters used by most signshops today. Streamline your design and production workflow with all of the standard design, layout, and text composition tools required for signmaking.



SignLab Vinyl Pro

Ideal for signshops that primarily create vinyl cut signage but also design full color graphics that they may farm out for wide format digitally printed signs. All the great tools included within SignLab Vinyl plus a complete feature set of advanced, yet easy to use color design tools required for large format printing.



SignLab Print and Cut

The professional signmakers choice for every day design and production of vinyl cut and digitally printed signs and graphics. It enables today's signmaker to design and produce every job in a single software package thereby avoiding the time consuming need to learn and jump from software to software package to meet the diverse requirements of modern, eye-catching signage. SignLab Print and Cut is anchored by Visual Production Manager a simultaneous, multiple job queue that supports most printers, cutters and hybrid print/cut devices available today.

Specialty Packages



SignLab CutPro

Simply the best value for professional design and production vinyl cutting software there is. Loaded with features, this software provides signmakers with limited budgets an affordable alternative to having to use multiple desktop publishing software packages alongside third-party bridge cutting software to get the job done. Be a professional, use a professional signmaking package and upgrade to other SignLab packages as your business needs grow.



SignLab DesignPro

A complete stand-alone, signmaking-specific design station. Great for existing SignLab users if you want to add a design-only workstation to your shop or for signmakers using other software. All of the bitmap/vector tools you need to create high-value, quality signage. Bring files from DesignPro into full-fledged SignLab packages that output to vinyl cutters or digital printers. Signmakers who don't use SignLab but may be using RIP-only software to send jobs to their digital printers or print/cut devices, are able to exploit the design power within this package by simply exporting the completed file directly to their software RIP and then print or print and cut the file. SignLab DesignPro is loaded with all the text composition, design and layout tools you need in a single easy-to-use package.



SignLab for VersaWorks™ Edition

A specially configured version of SignLab that sends designs directly to Roland™ VersaWorks™ queues and your Roland™ printer. Print quickly and easily to either queue "A" or "B" directly from SignLab. Includes the VersaWorks™ color palette for easy color matching with the VersaWorks™ swatch. Also includes all the great bitmap and vector design tools you need, complete professional text composition tools and most importantly, all the sign-specific layout and production tools you need to create signs and wide format graphics. No need to switch back and forth between different bitmap and vector design applications, do it all right from SignLab for VersaWorks™.



SignLab for Mimaki™ Edition

Enhance the utility of your Mimaki™ printer. SignLab for Mimaki™ sends jobs directly to your Rasterlink™ RIP software with an easy File>Print workflow. Reduce design and production time with tools specific to wide-format, digitally printed signage. Eliminate your dependence on multiple desktop design software packages and use a single signmaking-specific application to get all of your work done.

Total Solution Modules

Expand your revenue opportunities and offer your signage customers additional services by adding any of these modules to your existing SignLab package. * *Not all modules available as add-ons to every package. Please contact your dealer for details.*



SignLab Garment Decorating Module

Includes all of the software tools for direct to garment t-shirt printing that are bundled as part of the biggest selling inkjet t-shirt solutions installed worldwide! The pioneer in t-shirt printing software, CADlink has now made available our own brand product alongside all of the previous software packages we created for the best known solution providers. The software simplifies the entire process whether it be printing on white t-shirts or dark shirts using our unique underbase technology. This module also includes all of our widely used tools for rhinestone decoration. This truly makes it the most complete garment decorating package available today!



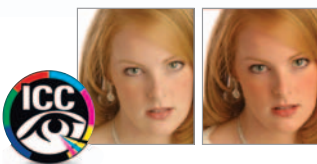
SignLab SignRouting Module

Yet another CADlink product that can be found bundled alongside some of the most widely used routers worldwide. The SignLab SignRouting module provides our existing SignLab users the ability to add-on routing functionality to their existing product, eliminating the learning curve for new, complicated software solutions. Create simulated 3-D text and graphics quickly and easily using chiseled and beveled text and graphics with our powerful 3D chisel algorithm using v-carve technology. Produce stunning, high-value signs on multiple substrates quickly and easily with our tool path algorithms that are up to twice as fast as competitive products.... and all in a single package that takes you from design to final production.



SignLab Engraving Module

Enhance your existing text composition and design tools with a series of engraver-specific production tools, fill routines and support for the latest as well as the most widely used legacy engravers being used today. Produce engraved signage, plaques, labels, etc. quickly and easily. Exploit extensive file format support including .DXF, EPS, .PDF, single line engraving fonts as well as efficiency tools such as optimized sort routines, sort/sequence jobs by color and instant tool path previews for all your engraving needs.



ICC Profiler Module

Create and edit the latest ICC compliant profiles quickly and easily. Compatible with all new ICC formats (Versions 2.1 and 4). ICC output files can be quickly and easily created using an intuitive "Printmode Creation Wizard". (Only available as an add-on to SignLab Print and Cut).



DeviceLinks/InkSaver Module

Extend existing ICC profiles by converting one color space to another with consistent results. Edit existing ICC profiles by adjusting components such as saturation, hue, etc. Save consumable costs by creating specific ink-saver modes without compromising output quality. (Only available as an add-on to SignLab Print and Cut).

Additional Add-on Modules

SignLab for VersaWorks™ update to P&C

Add seamless interface to VersaWorks™ RIP software from your existing SignLab Print and Cut package.

FluidMask™ Module

Industry leading masking software that eliminates background images in an easy "paint by numbers" user interface. Integrates directly with your SignLab package.

Pantone™ Color Matching Module

Match Pantone™ colors confidently with this color-matching palette.

General Features	Vinyl	Vinyl Pro	Print & Cut
Windows 8®, Windows 7®, Vista® and XP® support	•	•	•
Optimized memory handling	•	•	•
Enhanced large bitmap handling/manipulation	•	•	•
Search and replace text and objects	•	•	•
Support for CMYK bitmaps and CMYK gradient fills		•	•
Anti-alias screen display	•	•	•
Adjustable "select tools" including lasso select	•	•	•
Save program preferences for re-install	•	•	•
Auto-create custom sign blank or substrate shape	•	•	•
OLE: insert object and convert to native	•	•	•
Multiple Instances	•	•	•
Improved Import/export filters incl. PSD, PS (export)	•	•	•
Link EPS, DCS-EPS files (Photoshop channels)	•	•	•
Native .PDF workflow support import, link, publish and edit (with advanced control settings)	•	•	•
Clip-art viewer	•	•	•
Grids and guides (vertical, horizontal, angled), lock guides	•	•	•
Multiple undo/redo and undo navigator (including text compose undo)	•	•	•
Pre-load color vinyl libraries/modify	•	•	•
Built-in TWAIN support	•	•	•
Scaling, sizing, fitting, alignment, flip	•	•	•
Arrays	•	•	•
Job notes/statistics	•	•	•
Lock/unlock graphics for editing	•	•	•
E-mail proofs (.PDF and .CDL)	•	•	•
Publish .pdf with color matching	•	•	•



Cutting Tools	Vinyl	Vinyl Pro	Print & Cut
Cut preview	•	•	•
Print and cut: contour apply/cut	•	•	•
Up-dated cutter drivers (150+)	•	•	•
Plot spooling	•	•	•
Interactive tiling /paneling for printing and cutting	•	•	•
Cut time estimator	•	•	•
Cut sorting	•	•	•
Tool tracker	•	•	•
Power weed	•	•	•
Contour cut with auto-bleed	•	•	•
Multi cut passes for thick materials	•	•	•
Send & receive cut files across network	•	•	•
Production queue supports multi cutters on multiple ports	•	•	•
Auto-schedule and archive cut files	•	•	•
Cut contour lines in linked EPS + PDF files			•
HalfCut, automated decal maker			•

expand... your choice

SignLab packages are configured to address specific signshop needs of all types. From start-up to high volume, you can find the exact package you require right here. Best of all, when your needs change, you can upgrade to any new package quickly and easily.

Text Tools	Vinyl	Vinyl Pro	Print & Cut
WYSIWYG text layout (horizontal/vertical)	•	•	•
Easy Menu-board creator for "instant" menu layouts (alignment, rows, columns, spacing)	•	•	•
Extended text character viewer	•	•	•
Font detective	•	•	•
Text to arc	•	•	•
Interactive kerning	•	•	•
1100+ fonts + TrueType [®] + Corel, AutoCAD font support	•	•	•
Spell checker	•	•	•
Fit text to path	•	•	•
Font creator	•	•	•
Auto kerning	•	•	•
Upper/lower case control	•	•	•
Text compression	•	•	•
Copy/apply text attributes	•	•	•
Multiple text selection	•	•	•
Embed fonts with saved native files	•	•	•
PostScript and URW font support	•	•	•

Design and Special Effects (vector images & text)	Vinyl	Vinyl Pro	Print & Cut
Advanced transparency support for vector, bitmap and gradient filled objects.		•	•
Transparency pattern options (7 to choose from)		•	•
Easy transparency adjustments ("make lighter", "make darker")		•	•
Extended alpha-channel controls (incl. simple "mask white")		•	•
Parametric shapes tool (stars, circles, rectangles, fan, arrows, spiral)	•	•	•
Auto Convert an object to shape (square / circle / star / oval)	•	•	•
Ginsu knife	•	•	•
Clip-art + decorative borders	•	•	•
Decorative cut	•	•	•
Unique stroke/line style tools, incl. width, gap controls	•	•	•
Advanced stroke/linestyle color tools, (gradients, multiple colors per stroke)		•	•
Rulers and dials	•	•	•
Create and edit strokes & vary stroke by scale factor	•	•	•
Dotted and dash line styles	•	•	•
Automatic striping	•	•	•
Inline /outline	•	•	•
Shadows: perspective, cast, drop, block	•	•	•
Metamorphosis	•	•	•
Distortions/special effects	•	•	•
Chisel effect	•	•	•
Multi color gradient fills - process colors		•	•
Retain object fills after welding	•	•	•
Save pattern fills to palette		•	•
Fantastic Fills library		•	•
Direct send to from Photoshop [™] , Corel [™] , Illustrator [™]	•	•	•

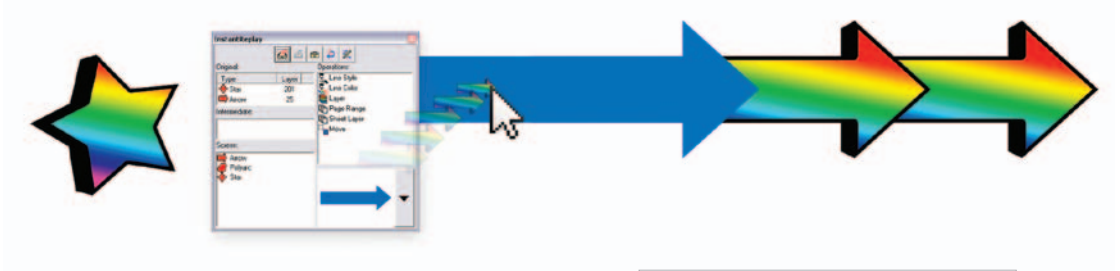
Advanced transparency support for vector, bitmap and gradient filled objects.



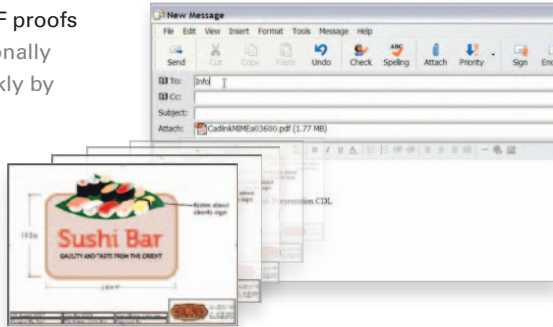
SPECTRUM FLORIST

County Fair

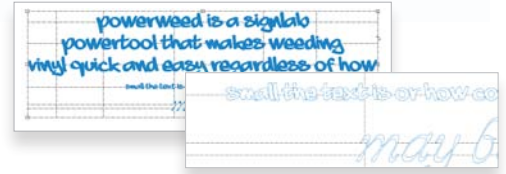
Instant Replay Repeat graphic styles and effects simply by copying, then applying them to a new object.



Send PDF proofs professionally and quickly by email.



Power Weed Save time, money and material.



Power Tools	Vinyl	Vinyl Pro	Print & Cut
Badge maker: auto substitute objects with serialization	•	•	•
Digitizing support	•	•	•
CenterLine tracing	•	•	•
InstantReplay	•	•	•
Registration marks	•	•	•
Nesting	•	•	•
Dimensioning, measure and add labels	•	•	•
Clipping / masking	•	•	•
Fit object to path	•	•	•
Fuse weld	•	•	•
Color welds	•	•	•
Convert stroke to cut outlines	•	•	•
Constant stroke stretching	•	•	•
Auto trap overlapping objects with bleed/choke	•	•	•
SuperSize Image, interpolate image while maintaining sharpness	•	•	•
Color vectorization	•	•	•
Vectorization Wizard			•
Object total area calculator	•	•	•
Customizable proof sheet tool	•	•	•

Specialty Color and Spot Color Features	Vinyl	Vinyl Pro	Print & Cut
---	-------	-----------	-------------

Inkjet spot color printing support			•
Global and object priming			•
Print priming layer as % tint to match % tint in spot and process gradients			•
Print spot as process			•
Print finish coat on object by object basis or flood page			•
CMY, CMYK and Hexachrome printing			•
Create duotones (two spot colors) by % tint			•
Create spot swatches by varying % tint			•
Create spot color blends between two spot colors			•
Create multi-tone bitmaps for spot printing			•
Preview raw print data			•
Multi-color gradient fills (spot and process colors)			•
Create and preview separations by color plane or in composite & merged planes			•
View halftones & trapping at pixel level			•
Simulate media color in viewer			•
Merge color planes to reduce screens			•
Apply user defined halftones and supercell screens			•
Custom ICC profiles for screen printers			•
Print separations on Windows™ desktop and large format printers			•

Print and Cut Tools (featuring Visual Production Manager)	Vinyl	Vinyl Pro	Print & Cut
High Fidelity, ICC compliant color management engine (ColorLogic™)			•
PostScript 3 compatible RIP			•
Streamlined print and cut interface			•
Multiple queues and printers simultaneously			•
Easy access queue tabs			•
Printing and pending job organizer			•
Automatic or manual tiling			•
Image in media placement preview			•
Send and receive print and cut files across a network			•
Job archiving, scheduling			•
Hot folder support for cross platform printing			•
RIP and print multiple jobs simultaneously			•
Direct print & cut from Photoshop™, Corel™, Illustrator™, Quark™, etc.			•
Auto nest prints			•
Preview raw print data, pixel by pixel, for each color channel			•
Contour cutting on hybrid print & cut devices			•
Decal mode-RIP once, print many			•
Link TIFF/EPS/DCS-EPS PDF files, substitute custom colors			•
Apply halftones and underbase to individual bitmaps and line art			•
LPT, Firewire, TCP/IP, USB support			•
Bi-cubic resampling			•
Scale, mirror, invert, rotate and print job			•
Soft proofing			•
ICC profile support			•
RIP CMY, CMYK, Hex, CMYKcLm, Hex+LcLm			•

Bitmap Tools	Vinyl	Vinyl Pro	Print & Cut
Transform bitmap	•	•	•
Bitmap select (lasso, marquee, magic wand)	•	•	•
Texture and pattern bitmap fills (incl. hatch fills)		•	•
Filters (blur, emboss, lighten, sharpen, invert, red-eye)		•	•
Color adjustment tools + color sampler (eye dropper)		•	•
Complete Bitmap editing application integrated with SignLab			•
Over 100 Special Effects plug-in filters (Eye Candy, Richard Rosenman™, Harry's Filter, Redfield, Filter Forge)		•	•



Hundreds of special effect plug-in options

Expand... your support network.



ValuePlus Means CADlink Software Customers Get More!

For over 20 years CADlink has provided our software customers with leading edge technology and tools that soon become industry standards. There is simply not a better choice you can make than to use our software.

So much more than great software. Buy SignLab and get....



Access to 100's of free online video's. Easy to search, quick to view, learn all about all of the tools in our software.



Instant access to the CADlink worldwide user community 24/7. Use our online forum located within InfoSource and share information with our worldwide software user community. Learn all of the tips and tricks from people who, like you, use our software daily.

Benefits of ValuePlus | Why ValuePlus should make your software decision even easier.

1. Maximize the value of your software investment. You've paid for the software, why not use every tool within it?
2. Software "tips and tricks" make you more efficient. Learn not only how to use the tools but how to use them easily and quickly.
3. Ever get the feeling that the software company you deal with is ignoring you? No CADlink competitors offer this type of premium customer service.

COMPATIBLE WITH:



SYSTEM REQUIREMENTS:

	MINIMUM	RECOMMENDED
CPU	P4 1GHz (or higher)	P4 1GHz (or higher)
HDD	40 GB	40 GB
RAM	512 MB	2 GB



www.cadlink.com

SignLab is a registered trademark of CADlink Technology Corporation. All other trademarks are property of their respective owners.

UNITED STATES:

500 Main Street
Clinton, MA 01510
Tel: 1-800-545-9581
Fax: (613) 247-1488

CANADA:

2150 Thurston Drive
Ottawa, ON - K1G 5T9
Tel: (613) 247-0850
Fax: (613) 247-1488

EUROPE:

Intech House, Wilbury Way
Hitchin, Herts, U.K. SG4 0TW
Tel: ++44(0) 1462-420222
Fax: ++44(0) 1462-420111