

# JET MASTER<sup>®</sup>

## PHOTO WRAP

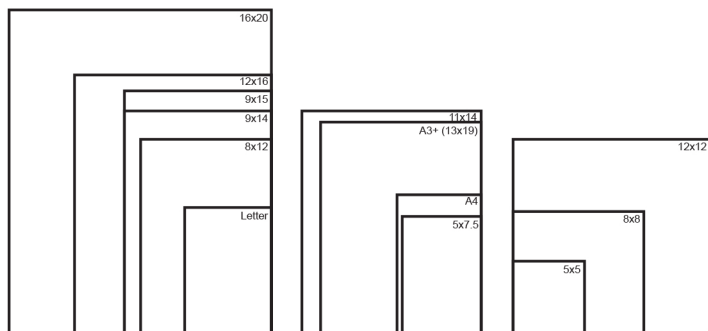
Print - Wrap - Display

With no need for stretcher bars, glue or staples, the JetMaster Photo Wrap reduces the time it takes to produce a professional gallery wrap to minutes. Using just a craft knife and cutting mat or scissors no special skills are required and using the specially developed JetMaster Paper means you can mount your prints straight from the printer with no drying time required.

The base is pre cut laminated self adhesive board. Simply remove the release liner and press your print into place. No bubbles when mounting and no battle against untidy corners, just tuck in the excess media and keep constructing your frame. A fully assembled JetMaster Photo Wrap can be hung from just one tack.

There is no longer any need in retail for expensive outsourcing of canvas wraps to specialist print shops. You can offer your customers a one stop shopping experience and, with the online upload utility, they can have a finished gallery wrap in under half an hour.

Size (inches)	Media Size	Minimum Printer Size Required	Finished Face size (mm)	Finished Frame Depth (mm)
5x5	8x8"/ 204x204mm	Desktop/ A4 sheet fed	123 x 123	20
5x7.5	8x10.36"/ 204x264mm	Desktop/ A4 sheet fed	123 x 184	20
A4	8.3x11.7"/ 210x297mm	Desktop/ A4 sheet fed	131 x 218	20
Letter	8.5x11"/ 216x280mm	17" roll/ A3 sheet fed	135 x 198	20
8x8	12x12"/305x305mm	17" roll/ A3+ sheet fed	203 x 203	25
8x12	12x16"/ 305x405mm	17" roll/ A3+ sheet fed	203 x 305	25
9x14	13.25x18.17"/ 337x462mm	17" roll/ A2 sheet fed	235x360	25
9x15	13.25x19.17"/ 337x487mm	17" roll/ A2 sheet fed	228 x 381	25
11x14	14x17"/ 356x432mm	17" roll/ A2 sheet fed	280 x 357	38
A3+ (13x19)	13x19"/ 329x483mm	17" roll/ A3+ sheet fed	249 x 332	20
12x12	16.73x16.73"/ 425x425mm	17" roll/ A1 sheet fed	305 x 305	30
12x12	17.95x17.95"/ 456x456mm	24" roll/ A1 sheet fed	305 x 305	38
12x16	16.73x20.73"/425x527mm	17" roll/ A1 sheet fed	305 x 406	30
16x20	29.72x24.72"/ 755x628mm	36" roll/ A0 sheet fed	406 x 508	30
16x20	22x26"/ 558.8x660.4mm	24" roll/ A1 sheet fed	406 x 508	38

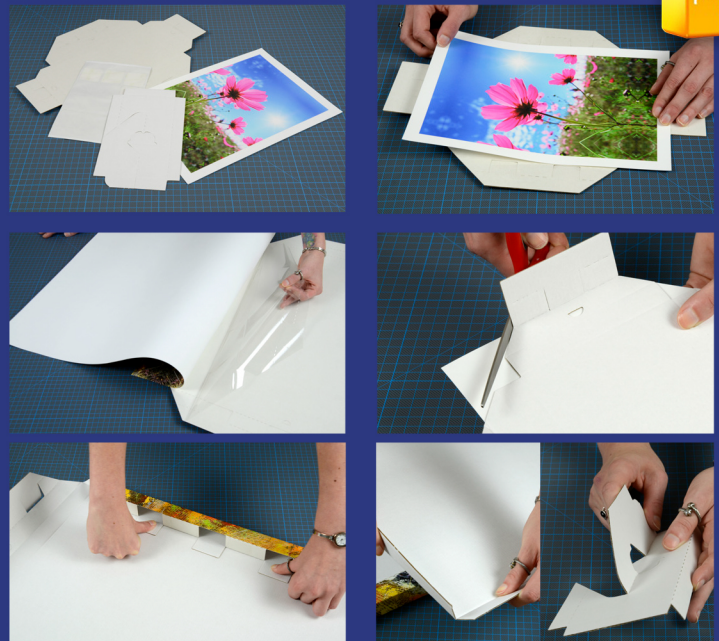


Print media is not included with frames.

**JET MASTER<sup>®</sup>**  
Image Display Systems



The JetMaster Image Display Systems Range is manufactured and distributed by Innova Art. For more information about Innova and their range of digital media visit [www.innovaart.com](http://www.innovaart.com)  
Display System - Worldwide Patents Pending



Replicates a Traditional Canvas Wrap



### Free Online JetMaster Print Utility

Create edge effects on your Photo Wrap print with ease using our free online upload utility. In three simple steps you will have a print ready PDF to download and save.



JetMaster Photo Wrap Available From:



Order online or call

**01905 454598**

[WWW.PLOT-IT.CO.UK](http://WWW.PLOT-IT.CO.UK)



# JETMASTER®

## PHOTO WRAP

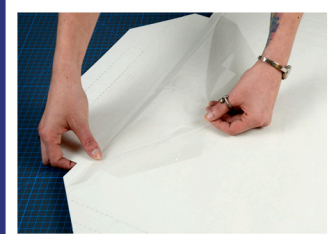


Order online or call  
**01905 454598**  
 WWW.PLOT-IT.CO.UK

Search *JetMaster Systems* on  
 YouTube to watch the video

### Print - Wrap - Display

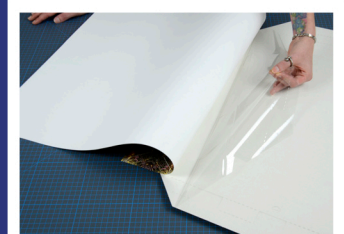
### Assembly Instructions



**Step 1:**  
 Remove part of the release liner and fold it back.



**Step 2:**  
 Align your print with the interior perforated line around the edge of the frame.



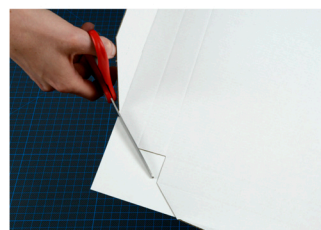
**Step 3:**  
 Carefully fold back your print and remove the rest of the release liner.



**Step 4:**  
 Place your print over the exposed adhesive and apply pressure using your hand or a roller to secure it in place.



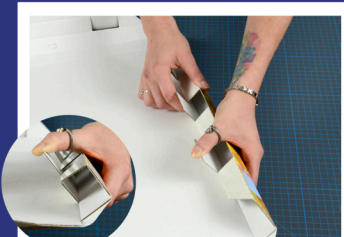
**Step 5:**  
 Pre fold all the creased lines on the back of the frame, ensure the face of your print is on a clean work surface.



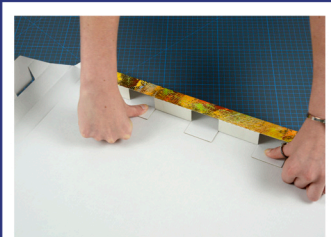
**Step 6:**  
 Use scissors to cut straight across each of the corner sections to remove the excess media.



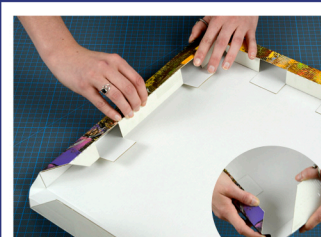
**Step 7:**  
 Fold up one edge of the frame and release the preformed tabs.



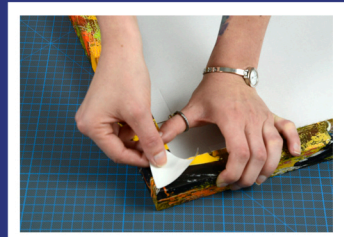
**Step 8:**  
 Fold the edge around until it forms a square.



**Step 9:**  
 Keeping the edge square apply firm pressure to secure the tabs to the back of the frame.



**Step 10:**  
 Repeat this process for each edge tucking in the media at each corner.



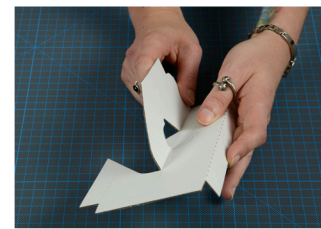
**Step 11:**  
 Gently support each corner to keep it square and apply the corner sticker to keep it in place.



**Step 12; Wall Hanging Frames:**  
 Fold the edges of the backing tray up.



**Step 13; Wall Hanging Frames:**  
 Place the backing tray into the back of the frame and press firmly in the centre to secure it to the exposed adhesive.



**Step 12; Desktop Frames:**  
 Fold the edges of the backing tray down and release the desk stand.



**Step 13; Desktop Frames:**  
 Place the backing tray into the back of the frame, taking care to make sure the desk stand is free.