

JETMASTER[®]

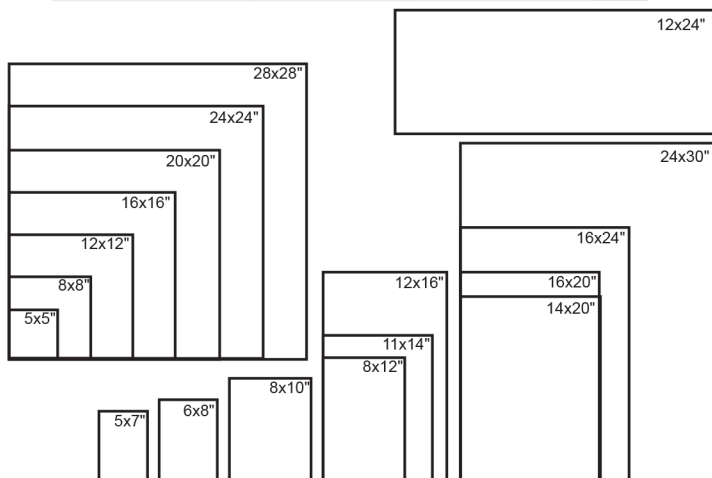
PHOTO PANEL

Print - Stick - Display

The **JetMaster Photo Panel** creates effortless impact for your images. A lightweight alternative to solid MDF display blocks, this photo mount has a pressure sensitive adhesive face and is available in a range of sizes with a choice of two smart matte edge finishes. JetMaster Photo Panels are simple to create and can be wall mounted or used as an attractive addition to any desk.

- Stylish frame free photo mount
- Choice of black or white matte edge finish
- Permanent pressure sensitive adhesive

Print Size (Inches)	Depth		Printer Type	Finished face size (Inches)	Quantity Per Box	
	mm	inches				
A4	25	1	Desktop	11.3x7.9	10	Black Edge Only
A3	25	1	Desktop	16.1x11.3	8	
A3+	25	1	17" roll/ A3+ sheet fed	18.6x12.5	8	
5x5	25	1	Desktop	4.7x4.7	10	Black or White Edge
5x7	25	1	Desktop	4.7x6.7	10	
6x8	25	1	Desktop	6.7x7.7	10	
8x8	25	1	Desktop	7.7x7.7	10	
8x10	25	1	Desktop	7.7x9.7	10	
8x12	25	1	Desktop	7.7x11.75	10	
11x14	25	1	17" roll/ A3+ sheet fed	10.7x13.7	10	
12x12	25	1	17" roll/ A3+ sheet fed	11.75x11.75	8	
12x16	25	1	17" roll/ A3+ sheet fed	11.75x15.75	8	
16x16	25	1	17" roll/ A2 sheet fed	15.75x15.75	8	
16x20	25	1	17" roll/ A2 sheet fed	15.75x19.7	8	
16x24	25	1	17" roll/ A2 sheet fed	15.75x23.6	8	
24x24	25	1	24" roll/ A1 sheet fed	23.6x23.6	8	
24x30	25	1	36" roll/ A1 sheet fed	23.6x31.5	5	
Available Whilst Stocks Last						
12x24	25	1	17" roll/ A2 sheet fed	11.8x23.6	8	Black or White Edge
14x20	25	1	17" roll/ A2 sheet fed	13.8x19.7	8	
20x20	25	1	24" roll/ A1 sheet fed	19.7x19.7	8	
28x28	25	1	36" roll/ A1 sheet fed	27.6x27.6	5	

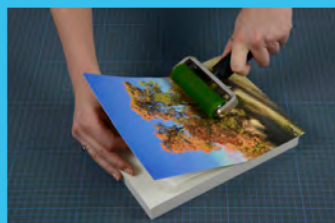
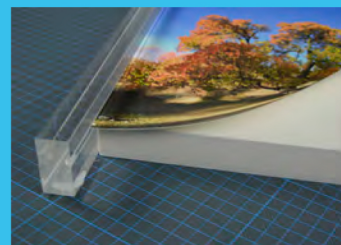


Custom sizes and edge finishes available on request subject to quantity.

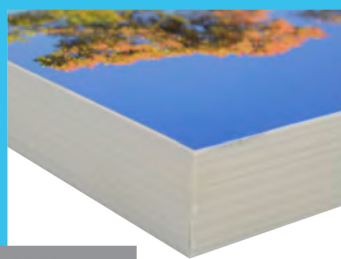
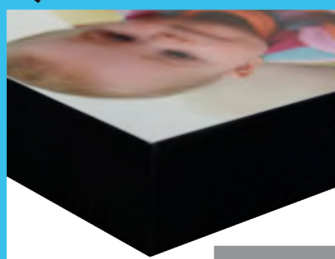
JETMASTER[®]
Image Display Systems



The JetMaster Image Display Systems Range is manufactured and distributed by Innova Art. For more information about Innova and their range of digital media visit www.innovaart.com



Tabletop or Wall Mounted Display



Choice of Black or White Edging

JetMaster Photo Panels look great when used with Olmec Photographic Papers - Also available from Innova Art

www.innovaart.com



JetMaster Photo Panel Available From:



Order online or call
01905 454598
WWW.PLOT-IT.CO.UK

www.innovaart.com

+44 (0) 1992 571775 | info@innovaart.com | +1 856-456-3200

JETMASTER®

PHOTO PANEL

Order online or call
01905 454598
WWW.PLOT-IT.CO.UK



Search *JetMaster Systems* on
YouTube to watch the video

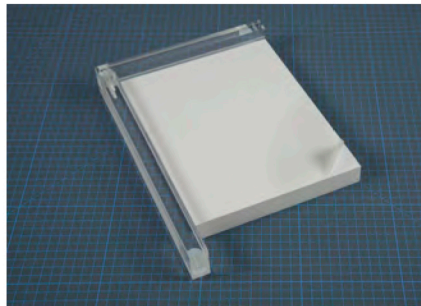
Print - Stick - Display

Assembly Instructions

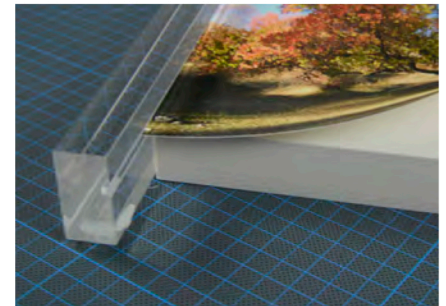
To get the best results print your image to the size specified in the print size column of the table on the previous page. Experiment with a range of finishes on the face of your photo panel by printing your image on different medias.



Step 1:
Peel back a small section of the release liner.



Step 2:
Place the photo panel into the alignment frame and fold back part of the release liner



Step 3:
Position your image using the alignment frame.



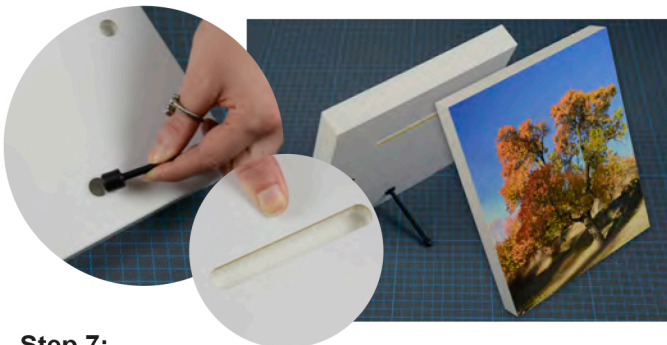
Step 4:
Secure a corner of your print using the area of adhesive you exposed earlier



Step 5:
Remove the rest of the release liner and apply even pressure using a roller.



Step 6:
Place your photo panel face down on a cutting mat and use a rotary cutter or craft knife to remove the excess paper from the edges.



Step 7:
Insert the desk stand into one of the pre drilled holes on smaller frames or use the slits on the back of larger frames to display your finished photo panel



JetMaster Photo Panel Tools

Cutting Mats, Alignment Tools and Rollers are all available from JetMaster Display Systems, contact us for further details. Rotary Cutters and Craft Knives are available separately.

www.innovaart.com

+44 (0) 1992 571775 | info@innovaart.com | +1 856-456-3200