



XYmatic trimplus

WWW.PLOT-IT.CO.UK

Order online or call

01905 454598

MAIN FEATURES

- LCD Touch Screen display with intuitive and easy-to-use software
 - Auto-alignment
 - Sensor to read cross-marks
 - Adjustable speed X & Y axis
 - Excellent cutting area visibility
 - Pneumatic Pinch Roll with silent compressor inside the machine
 - Automatic waste collecting system
 - Plug & Play
- Up to 10 pneumatic vertical cutting units
 - Double load reel
 - Tower Light
 - New alignment system of vertical cutting units
 - Open cutting units (no paper jam)
 - Monolithic machine structure
 - Standard loading jumbo Roll max diameter 400mm
 - Up to 20 customizable memories

OPTIONAL

- Single cutting unit (max 10)
- Central twin cutting unit
- Laser ray for vertical cut
- Table for copies collection

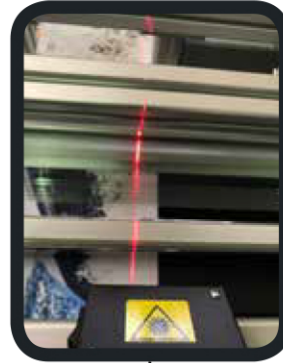
MATERIALS

- Paper (laminated or encapsulated)
- Wallpaper
- Canvas & Polyester (with liner)
- Reflective material
- PVC banner
- Vinyl & Vinyl sticker
- Display backlit & frontlit
- Magnetic rubber
- Polycarbonate in film

Innovative automatic cutting unit



Laser ray for vertical cut (optional)



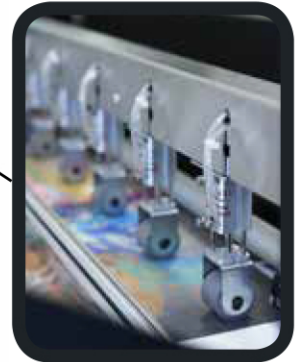
Tower Light



Intuitive and easy-to-use software



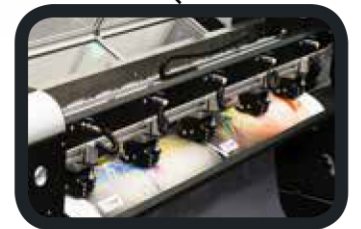
LCD Touch Screen Display



Pneumatic Pinch Roll



Silent compressor inside the machine



Double central cutting units (optional)



Pneumatic vertical cutting units

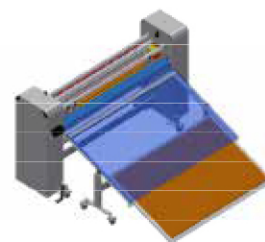


Table for copies collection (optional)

TECHNICAL INFO	XY MATIC TRIM PLUS
Width	1650 mm
Cutting thickness	
X AXIS	1,2 mm max
Y AXIS	0,5 mm max
Speed Advancement	1-50 m/minute
Cutting unit max	10 vertical unit
Horizontal cutting speed	1-150 m/minute
Power supply	230V - 50Hz - 650W



NeoltFactory srl
Headquarters: Via Italia, 6 - 24030
Valbrembo (Bergamo) ITALY
Tel: 035468811 Fax: 035468886
www.neoltfactory.com

You can also find us on the bigger social

