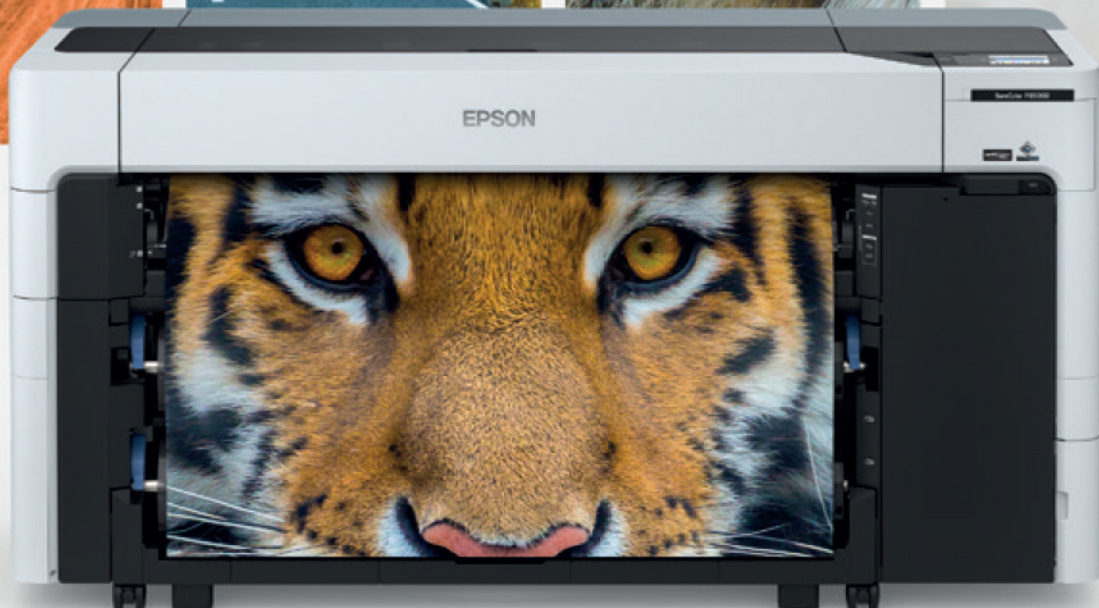
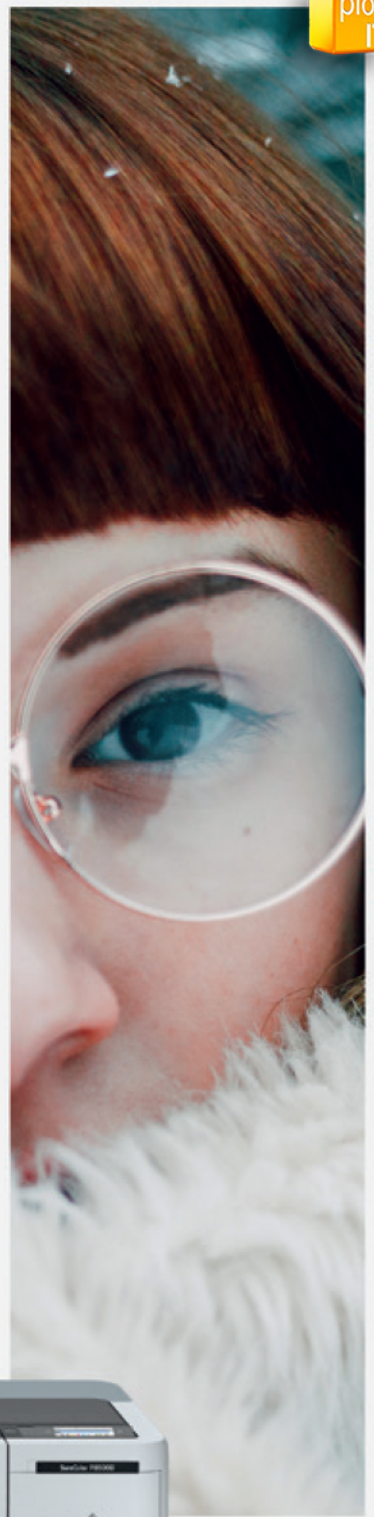


SureColor SC-P8500D

plot  
IT

# Compact and stylish commercial photo and poster printer



[WWW.PLOT-IT.CO.UK](http://WWW.PLOT-IT.CO.UK)  
Order online or call  
01905 454598

**EPSON**<sup>®</sup>  
EXCEED YOUR VISION



# High-quality, secure printing with enhanced productivity

The SureColor SC-P8500D is a 44-inch, high-quality commercial printer for photos and posters, with a compact, contemporary design. It is the ideal choice for use in poster production and copy shops, combining highly-secure, productive printing, vibrant image quality and easy operation.

The intuitive design and compact footprint mean the printer can fit seamlessly into environments with limited space. The impressive output speeds and a dual roll facility help to boost productivity; while enhanced IT and security features mean secure and safe printing of confidential images and documents.

## **Produce vibrant, high-quality photos and posters**

Excellent print quality is achieved thanks to the SC-P8500D's 6-colour UltraChrome Pro6 pigment inkset, including a new grey ink which provides smooth gradation and reduced graininess. This means the print quality of the SC-P8500D is equivalent to other 8-colour printers in the market. It's also supported by Adobe Postscript 3 as standard which delivers faster processing times for the most complex image reproduction (PDF, JPEG, TIFF, EPS, Cals-G4 data files.) The PrecisionCore MicroTFP printhead, Variable Sized Droplet Technology and Nozzle Verification Technology combine to produce vibrant, high-quality images, time after time.





### Increase productivity with impressive speeds and dual-roll capability

The SC-P8500D offers impressive print speeds for increased productivity. Its 2.64-inch PrecisionCore MicroTFP printhead prints up to 18m<sup>2</sup>/hr in photo quality and enables auto-switching between two different media types or sizes and the optional production stacker\* allows continuous unattended printing of two full rolls of media, to support high production volumes. The automatic take-up reel function of the upper roll enables high productivity roll-to-roll printing. The printer's new drop-in auto paper loading system makes it easy for even inexperienced users to handle roll media. Loading cutsheet and posterboard from the front is also beneficial for untrained users.

### Protect sensitive images and documents

With its enhanced IT and security features, for data protection of confidential images and documents, the SC-P8500D is a highly secure printing solution for use in copy shops and photo production retail environments.

\*Subject to availability

### Place anywhere

The contemporary design and compact footprint of the SC-P8500D makes it an ideal fit for most working environments, particularly where space is limited. With the smallest footprint in its class, the printer's flat top surface can be used as a proofing bench and station; while the flat back, front and sides mean it can be installed tightly against walls and cabinets. Everything on the SC-P8500D is accessible from the front, with its intuitive interface and customisable 4.3-inch touch panel providing a simplified user experience. And with Wi-Fi connectivity, the SC-P8500D can be placed anywhere.

### Monitor production levels in real time

With the Epson Cloud Solution PORT web browser with dedicated app for smartphone and tablet, you can check the status of your printer fleet and manage it anytime, anywhere.

The Production Monitor provides clear, easy to understand graphics that enable you to see at a glance how each printer in your fleet is performing. Thanks to the detailed data available, you'll be able to easily analyse productivity and receive clear operational updates every day, from anywhere to support high productivity and efficiency as well as maintenance tracking remote troubleshooting services.

[www.epson.co.uk/port](http://www.epson.co.uk/port)





| Model                           |                                  | SureColor SC-P8500D   |
|---------------------------------|----------------------------------|---|
| Print                           | Technology                       | VSDT (Variable-Sized Droplet Technology)*1  |
|                                 | Printhead                        | PrecisionCore MicroTFP printhead  |
|                                 | Nozzle Configuration             | 9600 nozzles (400 nozzles x 24 channels x 1 head)   |
|                                 | Maximum Resolution               | 2400 x 1200 dpi   |
|                                 | Minimum Ink Droplet Volume       | 3.5pl   |
|                                 | Print Speed                      | B0 size Premium Glossy Photo Paper 170gsm 152 sec (Speed) 281 sec (Quality) 614 sec (Max Quality) Plain Paper 35 sec (Draft) 46 sec (Speed) 258 sec (High Quality)  |
|                                 | Margin (Roll paper)              | Top, bottom : Min. 3mm right, left : Min. 0mm *2  |
|                                 | Margin (Cut sheet)               | Top : Min. 3mm bottom : Min. 12.7mm right, left : Min. 0mm *2   |
| Ink                             | Ink Types                        | Pigment ink   |
|                                 | Ink Brand Name                   | ULTRACHROME PRO 6 INK   |
|                                 | Colours                          | Cyan, Magenta, Yellow, Gray, Photo Black, Matte Black   |
|                                 | Ink Capacity                     | 350ml, 700ml  |
| Media Handling                  | Paper Path                       | Roll (Double roll), Cut sheet (manual feed), Poster board (manual feed)   |
|                                 | Maximum Roll Diameter/Weight     | Max. 170 mm / 12.5Kg  |
|                                 | Paper Width (Roll)               | 254mm to 1,118mm  |
|                                 | Paper Width (Cut sheet)          | 203mm to 1,118mm  |
|                                 | Paper Thickness                  | Cut sheet : 0.07mm to 0.8mm Poster board : 0.8mm to 1.5mm   |
|                                 | Maximum Printable Length         | 91m*3   |
|                                 | Border less sizes                | 1118, 1030, 914, 841, 728, 700, 610, 594, 515, 508, 500, 432, 406, 356, 330, 300, 254   |
| Control Panel                   | Colour/Size                      | 4.3 inch Optical Touch Colour LCD   |
| Connectivity                    | Interfaces                       | SuperSpeed USB*4, 100BASE-TX /1000BASE-T/IEEE802.11b/g/rv/ac, USB memory stick*5  |
|                                 | Printer Language                 | ESC/P raster, HP-GL/2*6, HP RTL*6, Adobe PostScript, Adobe PDF 1.7  |
|                                 | HDD(Optional)                    | SSD 960GB   |
| Dimensions and Weight           | Printer Dimension (W) Printing   | (W) 1,848mm, (D) 829mm, (H) 975mm   |
|                                 | Printer Dimension (W) Stowed     | (W) 1,848mm, (D) 499mm, (H) 975mm   |
|                                 | Weight                           | 155 [kg]*7  |
| Electrical Specification        | Voltage                          | AC 100-240V 50/60Hz   |
| Power Consumption               | Operating                        | 70W   |
|                                 | Ready                            | 32W   |
|                                 | Sleep                            | 2.0W  |
|                                 | Power Off (Stand by)             | 0.3W  |
| Acoustic Noise Level            | Sound Pressure Level <db(A)>     | 46  |
|                                 | Sound Power Level <B(A)>         | 6.4   |
| Utility Software                | Utility Software (Bundled in CD) | Windows - Printer driver - EpsonNet Setup - EpsonNet Print - EpsonNet Config SE - EPSON manuals - Manual Launcher - LFP Print Plug-in for Office - PS Driver - PS Folder  |
| Utility Software (Web delivery) |                                  | Windows - Epson Media Installer - EpsonNet SetupManager - Epson Device Admin - Epson Edge Dashboard - Epson Print Layout - Epson Print Automate - Epson Edge Print (Option) - Epson Print Admin (Option) - Order Controller (Option) Mac - Printer driver - EpsonNet Config SE - EPSON manuals - Epson Media Installer - Epson Edge Dashboard - Epson Print Layout - PS Driver iOS/ Android - Epson Smart Panel |
| Options                         |                                  | Roll Feed Spindle (44-inch), SSD Unit, Production Stacker (44-inch)   |
| Consumable                      |                                  | Ink cartridge, Maintenance Box, Borderless Maintenance Box, Printer Cutter Blade, Cleaning Stick  |
| System                          | Windows supported OS             | Windows®10, Windows®8.1, Windows®8, Windows®7, Windows®, Vista, Windows® XP (32bit/64bit), Windows® Server 2019/2016/2012 R2/2012/2008 R2/2008/2003 R2/2003 SP2 or later  |
|                                 | Mac Supported OS                 | Mac OS X 10.6.8 or later, macOS 11 or later   |
| What's in the box               |                                  | Printer, Initial ink cartridge, AC power cable, Setup guide, Software CD-ROM, Maintenance box. (may differ by region)   |

CoverPlus

ULTRACHROME  
PRO 6 INK

Adobe PostScript® 3

Works with  
Apple AirPrint

PRECISIONCORE  
PRINTHEAD

Epson Cloud Solution  
PORT

1. Variable-Sized Droplet Technology can produce up to three different sizes per pixel.
2. It differs by applications/media.
3. Printable length is limited depending on restrictions of OSs or applications.
4. Compatible with the USB 3.0 Specification.
5. Not compliant with USB memory using encryption or a security function. May not work if connected through USB memory reader/writer or extension cable.
6. It is recommended to do test before purchasing printer if HP-GL/2 or HP RTL direct print is used, because whether supported or not depends on application or data.
7. Included in weight: Borderless MBox x2, Maintenance Box x1, Spindle x2.

For more information please contact:

Home users: 0343 90 37766  
Business users\*: 0871 42 37766  
Republic of Ireland: 01 436 7742



Or visit us at [www.epson.co.uk/contactus](http://www.epson.co.uk/contactus)

\* 10p per minute plus network extras.

Trademarks and registered trademarks are the property of Seiko Epson Corporation or their respective owners. Product information is subject to change without prior notice.

EPSON®