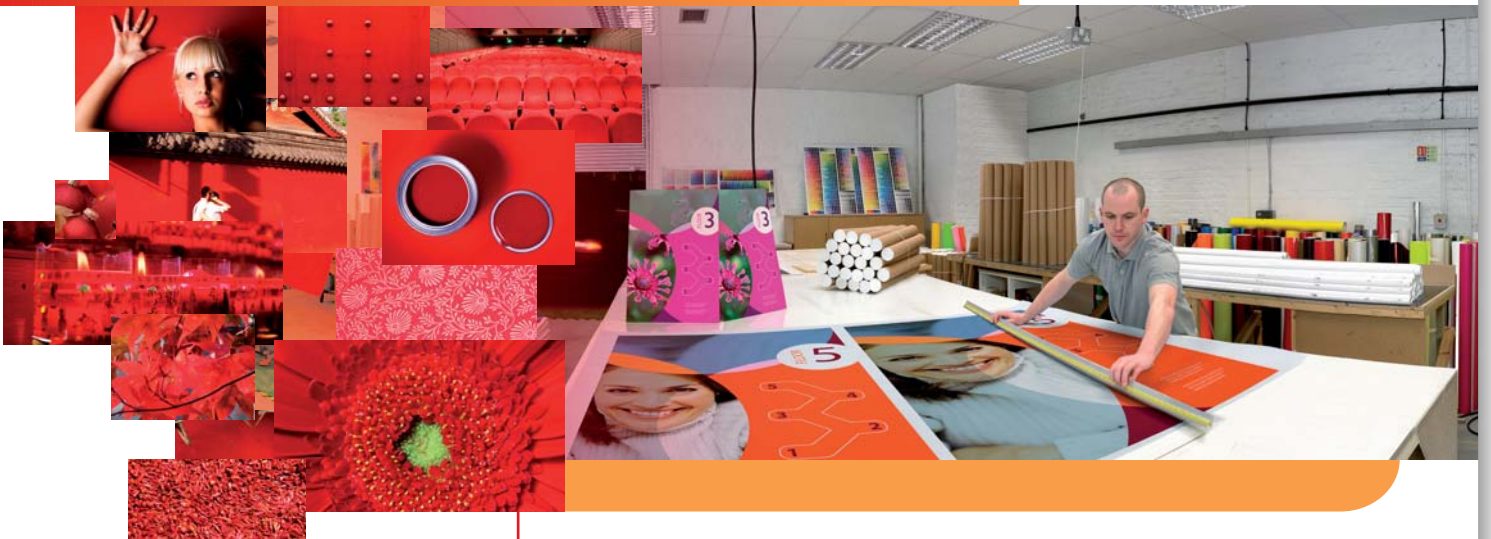


you can  
**Canon**

Large Format  
Print Solutions

LFP SOLUTIONS



## Production

Posters & Signmaking

*We Speak Image*

**Canon Large Format Printers for Production Environments.** Our huge range of Large Format Printers ensures that there is a production device specifically designed to handle the applications your customers demand.

Hard-hitting poster campaigns, eye-catching signs or head-turning exhibition graphics: Canon's Large Format Production Printers help you create the best possible results.

Big on innovation, these devices effortlessly combine unbeatable productivity, ease-of-use and industry-leading print quality to ensure you can bring your customers' most ambitious plans to fruition.

#### **Big benefits with Canon**

When a Canon engineer, quite by chance, left a hot soldering iron lying across an ink-filled cartridge in the mid-1970's, inkjet or bubble-jet as Canon has named this technology was born. This discovery has formed the basis for today's Canon bubble-jet printers including our range of Large Format Printers. Our LUCIA ink system sits alongside numerous innovations such as KYUANOS, Canon's next generation colour management system and the L-COA system architecture, capable of delivering unbeatable productivity in your production environment.

**Choice is as wide as  
your imagination**

## Canon's Large Format Print Solutions for **Production**



iPF8000S

iPF9000S

### The range

For true print flexibility, Canon offers the imagePROGRAF iPF8000S and imagePROGRAF iPF9000S giving you the choice of 44" and 60" large format print capabilities respectively.

Each device is designed to offer everything you need for outstanding productivity in sign making, poster creation and similar production applications. The inks feature a mirrored layout which means prints are

incredibly fast – a necessity in today's production environments. The consistent, high quality prints also offer high scratch resistance, reduced graininess and excellent graduation.

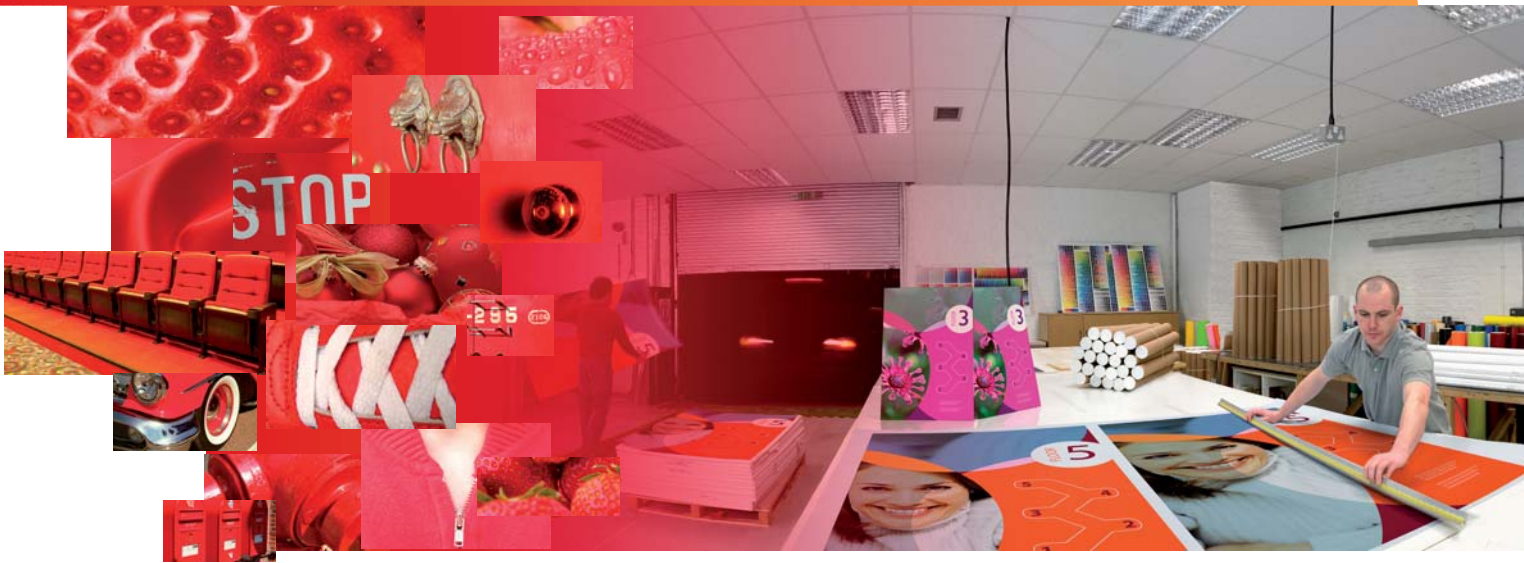


**imagePROGRAF**

Create whatever you want:

- **Indoor signs**
- **floor murals**
- **vehicle graphics**
- **exhibition panels**
- **posters**

Canon's Large Format Print Solutions for Production



## Brilliant performance makes for big opportunities

In your Production environment you need quality, dependable results across a diversity of media. And most importantly, you need to be able to satisfy the most pressing demands of your customers on time and every time. With the capability to print up to a sizeable 60", Canon's iPF8000S/iPF9000S delivers the big performance whenever you need it.

### Beat your deadlines

Look forward to superb speeds and unbeatable productivity with the iPF8000S/iPF9000S. Canon's twin print head features a mirrored arrangement of 3 LUCIA ink colours which enables it to print much faster than conventional printing systems. An ink buffer system also allows inks to be replaced without interrupting printing. Plus, an 80GB hard drive is built-in, rapidly freeing host PCs from operations and improving overall print efficiency.

### Expect the highest quality

Posters, graphics and display media always look superb and incredibly consistent - whatever media you choose. Canon's unique LUCIA inks set new standards in expressiveness producing a huge colour gamut and excellent graduation at 2400 dpi using super-fine 4pl droplets.

### A pleasure to use

Operators are sure to appreciate the large LCD operation panel providing clear menu-driven controls that ensure quick and simple operation with minimal training. A thoughtfully designed fan system ensures the quietest of operation.



### Handle media efficiently

A whole host of media options from Canon ensure you can satisfy a huge diversity of customer requests. And the iPF8000S/iPF9000S handles them all with ease and exceptional reliability. Problems with potential media misalignment are virtually eradicated thanks to auto-skew correction which automatically adjusts for any skew in orientation and feeds the paper correctly.

### Demand long term durability

Make the iPF8000S/iPF9000S part of your production operation and bring with it the levels of reliability and long-term durability you would expect from a company such as Canon. For added peace of mind our range of large format printers come with one years warranty on the Canon print head from the date of purchase\*. And for the best results well into the future, we recommend you always use Canon inks and media.

### Efficient and economical

The cost efficient iPF8000S/iPF9000S ensures you enjoy the highest return on investment. A sub tank system is employed which works as an ink buffer. Ink is transported from the cartridge to the sub tank and then onto the print head. Because the ink is loaded from the sub tank- instead of the cartridge - empty cartridges can be replaced without interrupting printing and every last drop of ink is utilised.

An Economy Mode can be selected for certain jobs, which uses only 5 instead of the usual 7 colours. Thereby reducing ink usage and running costs - ideal for minimising costs and maximising profits.

For the busiest large  
format production  
environments.

## Big on innovation for prints that are hugely impressive

Years of painstaking research and development have resulted in the numerous innovations incorporated within our Large Format Printers. All these developments are designed to enable you to offer the widest range of applications to your customers.



### Print with FINE technology

To deliver faithful image expression, ink droplets must be extremely small and precisely distributed. When droplets become microscopic, however, image quality is affected by problems such as uneven droplet size and placement on the paper. Conventional printing systems compensate by making multiple passes for each line but this adds significantly to print times.

Canon's FINE (Full photolithograph Inkjet Nozzle Engineering) overcomes this problem without needing to make multiple passes, producing bi-directional printing at incredible speeds. An innovated ink-nozzle manufacturing method results in precisely uniform ink droplets and outstanding photo-quality print performance.



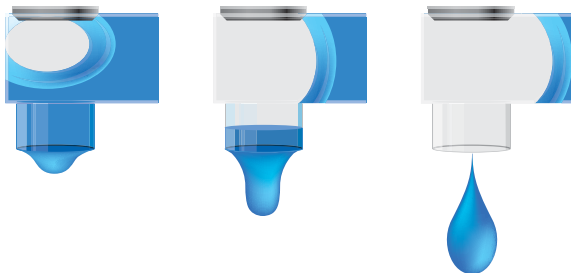
### Excellent expression with LUCIA inks

The finest results come courtesy of Canon's unique LUCIA inks. Developed in combination with the printer technology (imagePROGRAF print heads and L-COA) to ensure superior colour performance – the Canon LUCIA inks boast an incredibly wide colour gamut, smooth gradation and reduced graininess for great results. The excellent lightfastness ensures print longevity with minimal image degradation, and the pigment-based ink offers excellent water resistance.



### L-COA for outstanding productivity

Providing the optimal balance between high productivity and high quality is Canon's Large format printer Common Architecture (L-COA). L-COA helps your iPF8000S/iPF9000S carry out large volume production work at speeds far in excess of the levels you might have thought attainable.

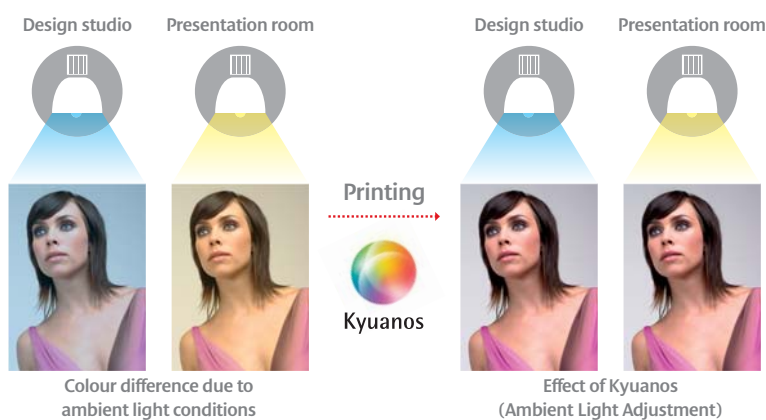


Canon's FINE technology uses ink bubbles that are formed at the top of the nozzle to separate and eject the ink.

## Kyuanos

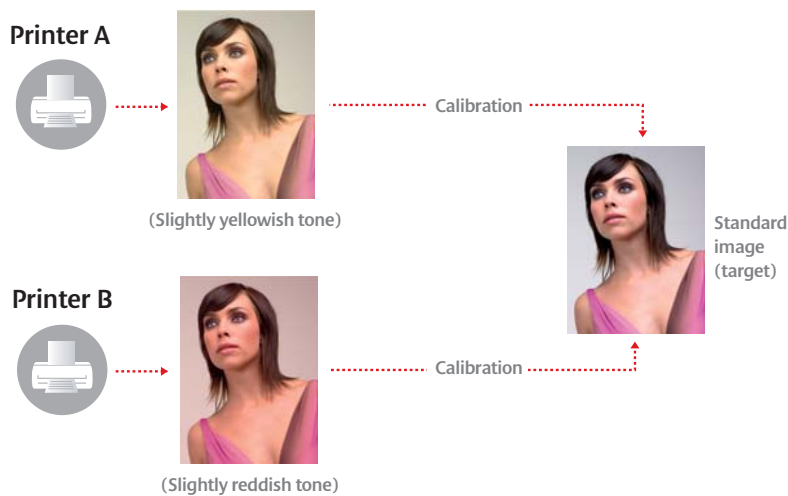
### Colour management with KYUANOS

The iPF8000S/iPF9000S features a next generation colour management system which is featured in the imagePROGRAF printer driver and in PosterArtist 2007 software. KYUANOS helps ensure optimal results for media that's to be used across varying light conditions. This feature enables you to compensate for colours before printing depending on the viewing environment to ensure optimum colour reproduction in the finished prints.



### Advanced Colour Calibration

A powerful colour calibration system ensures the most stable colour reproduction attainable. With conventional systems, it's possible that by changing the print heads, the most minute of variations in print output can occur due to the density characteristics of the print head. With the iPF8000S/iPF9000S a multi-sensor measures variations in density on a printed calibration chart and then automatically applies any appropriate adjustment to ensure an exact match for long-term consistency.



# Think bigger, better and more productive printing

Break down the barriers of your imagination with the highly productive iPF8000S/iPF9000S. Now you can move your Large Format Production facilities into new, profitable directions.

## Overview

### IPF9000S

#### Incredible Production speeds

(up to 37.4sqm/hr) ensures the toughest deadlines are always achievable

**Excellent colour expression** using next-generation LUCIA ink offering outstanding print consistency

**Reduced graininess** and outstanding print consistency

**2400 x 1200 dpi and 4pl**

**Borderless** printing (up to 42")

**Auto Skew Correction** for trouble-free printing

**Extensive media** compatibility for all your varied applications

**KYUANOS** for next generation colour management

**Large LCD control panel** makes operation quick and simple

**80GB HDD** as standard

**Optional** powerful poster creation software PosterArtist 2007

**Economy mode** for cost-effective printing

**'Hot-Swap' ink tanks** for continuous production



IPF8000S





## Canon Media & Ink

### The right choices can make an enormous difference

Provide more choice and better quality for your customers with Canon's exclusive range of specialist media. Designed for Large Format Printing applications we offer 40 high quality specialist options for Proofing, CAD&GIS, Fine Art, Photography and Production sectors.

Using Canon media ensures your entire production workflow process is undertaken with products designed to work in harmony for the highest possible performance levels.

The iPF8000S/iPF9000s have settings for each Canon media type and all media is supported with an ICC profile for perfect colour matching.

For the Production sector there are 14 specialist media for a diversity of poster and sign making finishes with roll widths of 10", 14", 17", 24", 36", 42", 50" and 60".

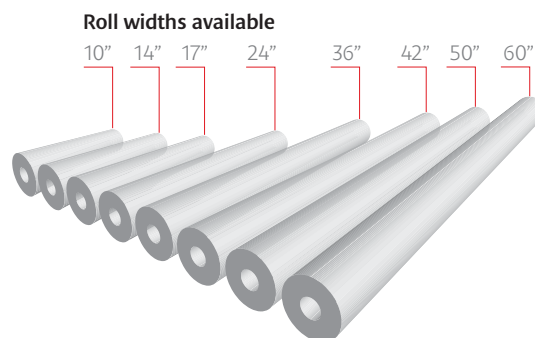
### Quality results with Canon inks

We're constantly looking to fine-tune the quality of our inks and thereby the quality of your prints. That's why choosing LUCIA inks, developed specifically and solely for your printers, is the sensible choice.

The LUCIA ink system used in the iPF8000S/iPF9000S incorporates 8 colours, available in both 330ml and sizeable 700ml tanks, providing:

- A wide colour gamut and smooth graduations
- Exceptional scratch resistance, reduced graininess and reduced bronzing
- Excellent reliability and consistency

Poster, signs and graphics look their best with Canon media & Ink.



## Software designed to expand your opportunities

When you work with Canon you work with a company that carefully considers how you run your business. That means people who understand how you operate, products designed to get the job done and added-value software equipped to maximise your business opportunities.



### Drive your business forward

Ultimate control in your production environment comes courtesy of Canon's flexible imagePROGRAF Printer Driver. An "easy mode" allows you to use Canon's pre-defined settings for speed and simplicity of use. Switch to "advanced mode" however and you can adjust drying times, colour settings and manage your own ICC profiles.

Page set-up provides pure flexibility allowing customised page sizes if required and a best-fit option for each media is selectable. Select the watermark feature and you can protect the rights of your images. For enhanced workflow, pre-defined settings can be created using hot folders.

A maintenance facility allows you to adjust the media feed, do a nozzle check, clean the print heads, check the queue and carry out other timesaving procedures.

### Work perfectly with Photoshop

Canon's Photoshop Plug-in ensures you benefit from optimal performance when working with PhotoShop. Normally, PhotoShop will launch print jobs to Large Format Printers using 8-bit images resulting in lower quality results. However Canon's Photoshop Plug-in achieves the highest quality attainable by automatically utilising 12-bit images for processing.





### Seamless link with Digital cameras

Images captured on your digital camera can be seamlessly linked with your iPF8000S/iPF9000S using Canon's Digital Photo Front Access software. The software allows you to easily edit photos before using them in Adobe Photoshop or Canon PosterArtist.

With Canon's Digital Photo Professional you can seamlessly link your iPF8000S/iPF9000S for use with the software that's included with Canon's digital camera series.

### Create incredible posters

Quick-to-design and even quicker-to-impress posters are part of your portfolio as soon as you install Canon's optional PosterArtist 2007 software. Designed for users who haven't the time or the necessary expertise to create highly professional posters from scratch, PosterArtist 2007 makes everything simple. With over 1,000 images and templates built-in and ready to use, the poster creation process is carried out in just four simple steps.

**Widen your business horizons with the iPF8000S/iPF9000S.**

LARGE FORMAT PRINT SOLUTIONS

Explore huge possibilities with Canon.



you can  
**Canon**

Canon Inc.  
[www.canon.com](http://www.canon.com)

Canon Europa N.V.  
[www.canon-europe.com](http://www.canon-europe.com)

© Canon Europa NV 2007