



AutoCAD[®]

Architecture 2009

Autodesk[®]

The Version of AutoCAD Software for Architects

Collaborate and create without missing a beat, with purpose-built architectural drawing and design tools in a software environment you already know.

Immediate Productivity

If you are an architect who knows AutoCAD® software, you already know a lot about AutoCAD® Architecture software. Within its familiar environment, you can begin using AutoCAD Architecture immediately and in ways more focused on your architectural needs and projects. Create accurate drawings, documentation, and schedules faster. As you use the software, you can discover even more ways to improve your productivity, all at your own pace.

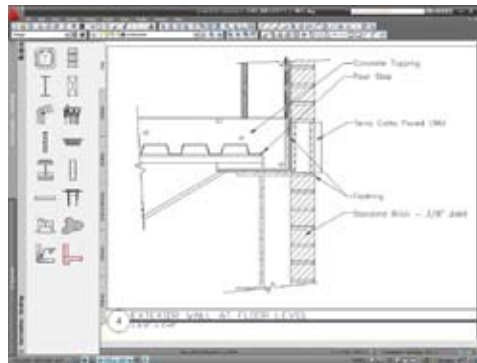
Smooth Collaboration

Realize your clients' vision and let them share yours. Integrated rendering tools enable creation of contextualized design visualizations, making for easier approvals and clearer communication with your clients. Streamline collaboration and coordination of design information with engineers and design professionals through the industry-leading DWG™ file format.

Key Features in AutoCAD Architecture

Details

AutoCAD Architecture software includes a comprehensive library of detail components and keynoting tools. Rather than spending time and effort on tedious documentation and annotation of designs, fully automate the creation of details and help ensure that annotations are appropriate and consistent. When you are ready, it's easy to quickly generate keynote legends.



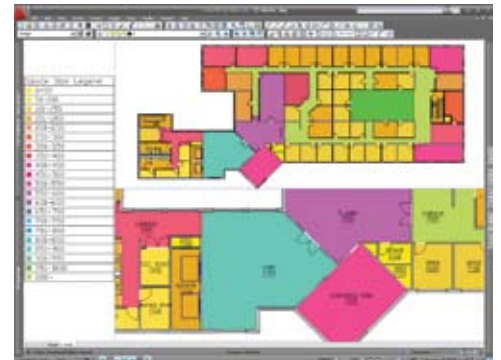
Walls, Doors, and Windows

Draw and document typical building elements such as walls, doors, and windows. Automatically insert and place doors or windows with complete placement control. Move any wall, and all connected walls and spaces automatically update.



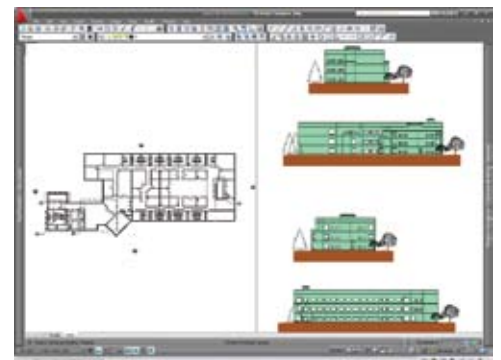
Spaces

Tag every room in a drawing, complete with room areas, automatically. As room boundaries change, you can easily update spaces. Tags and areas automatically update, saving you time in maintaining accurate documentation.



Sections and Elevations

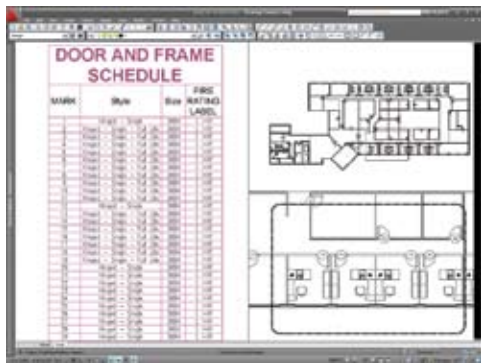
Generate 2D sections and elevations with material hatching, directly from your floor plans. If your design changes, the software generates fully updated section and elevation graphics, maintaining layer, color, linetype, and other properties.



Enhanced AutoCAD Software-Based Design and Documentation Productivity for Architects

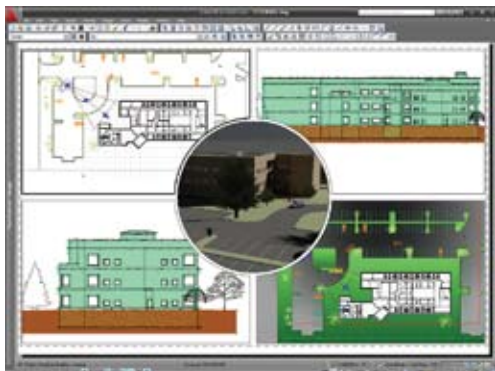
Scheduling

Whether you are customizing out-of-the-box schedule styles to adhere to company standards or creating new schedules from scratch, you can do so with ease. Because schedules are linked directly to your designs, you can update them to reflect any design changes at the click of a button.



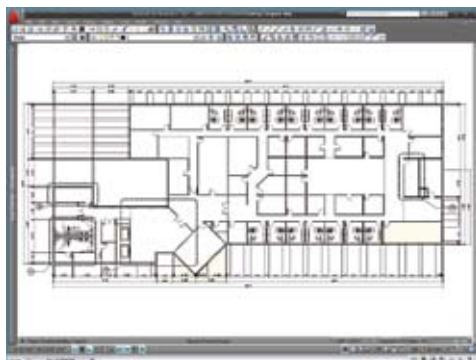
Rendering

Bring designs to life for client presentations at any stage of the design with integrated rendering. Streamlined visualization capabilities are fully integrated into the AutoCAD Architecture workflow. Make your presentations stand out by visually communicating richer design information.



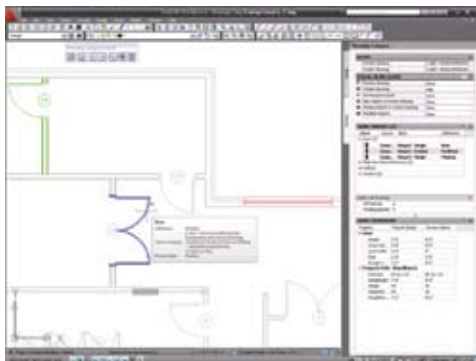
Dimensioning

With even greater flexibility in AutoCAD Architecture, you can now dimension any wall—and all its components—according to your own dimensioning standards, including wall stud centerlines and faces. And because dimensions are associative, they automatically update as your designs change, reducing the tedium of manual updates.



Drawing Compare

Drawing Compare, available only through Autodesk® Subscription, enhances collaboration by using color-coded displays to show items on a drawing that have been changed, added, or deleted by other members of the design team. Changes to items such as styles, fire ratings, or other nongraphical properties are also tracked. Combined with redlining features, such as revision clouds, Drawing Compare helps make communication across the design team clearer than ever.




Dreamspell Design Limited

In two decades working with every imaginable type of client, chartered architectural technologist David Chaddock has encountered most of the architectural software solutions out there. For Dreamspell Design Limited, the architectural firm he founded in 1997, Chaddock chose AutoCAD Architecture.

“AutoCAD Architecture is easy to learn and enjoyable to use,” says Chaddock. “Building on my AutoCAD knowledge, I’ve built up my skills smoothly and efficiently. I’m proud of what I can produce with it.”

Running a relatively small startup company, Chaddock finds that his time is at a premium. When he founded Dreamspell, he knew he wanted to use an AutoCAD-based system:

“Because AutoCAD Architecture automates many drafting processes, it enables me to quickly explore different possibilities and end up with a high-quality, more innovative end design,” he says, explaining why he chose AutoCAD Architecture. “I couldn’t go back to any other type of solution now.”

 Inserting doors and windows in the walls is also really fast. There's no more trimming and all that other time-consuming stuff. It just goes away. That adds time to do other things—and to produce a better product.

—Stephen Keller
Designer
The S/L/A/M Collaborative
Boston, Massachusetts

Learn More or Purchase

Access specialists worldwide who can provide product expertise, a deep understanding of your industry, and value that extends beyond your software purchase. To purchase AutoCAD Architecture, contact an Autodesk Premier Solutions Provider or Autodesk Authorized Reseller. To locate the reseller nearest you, visit www.autodesk.com/reseller.

To learn more about AutoCAD Architecture, visit www.autodesk.com/autocadarchitecture.

Autodesk Design Review

Directly publish to DWF™ format from AutoCAD Architecture for an easy and secure way to distribute and share designs or construction documentation. The free* Autodesk® Design Review application gives your project team an easy way to view, print, mark up, and measure changes to drawings without the original design creation software. To learn more, visit www.autodesk.com/designreview.

Autodesk Services and Support

Accelerate return on investment and optimize productivity with innovative purchase methods, companion products, consulting services, support, and training from Autodesk and Autodesk authorized partners. Designed to get you up to speed and keep you ahead of the competition, these tools help you make the most of your software purchase—no matter what industry you are in. To learn more, visit www.autodesk.com/servicesandsupport.

Autodesk Subscription

Get the benefits of increased productivity, predictable budgeting, and simplified license management with Autodesk Subscription. You get any new upgrades of your Autodesk software and any incremental product enhancements, if these are released during your subscription term, and you get exclusive license terms available only to subscription members. A range of community resources, including web support direct from Autodesk technical experts, self-paced training, and e-Learning, help extend your skills and make Autodesk Subscription the best way to optimize your investment. To learn more, visit www.autodesk.com/subscription.

Cover photo courtesy of the S/L/A/M Collaborative. © Woodruff/Brown Architectural Photography.

*Free products are subject to the terms and conditions of the end-user license agreement that accompanies download of this software.

Autodesk, AutoCAD, DWF, and DWG are registered trademarks or trademarks of Autodesk, Inc., in the USA and/or other countries. All other brand names, product names, or trademarks belong to their respective holders. Autodesk reserves the right to alter product offerings and specifications at any time without notice, and is not responsible for typographical or graphical errors that may appear in this document. © 2008 Autodesk, Inc. All rights reserved. 00000000000118307